



# GMT MONTHLY MEMBERSHIP PROGRESS REPORT

Results as of: 6/30/2018

Multiple District 310

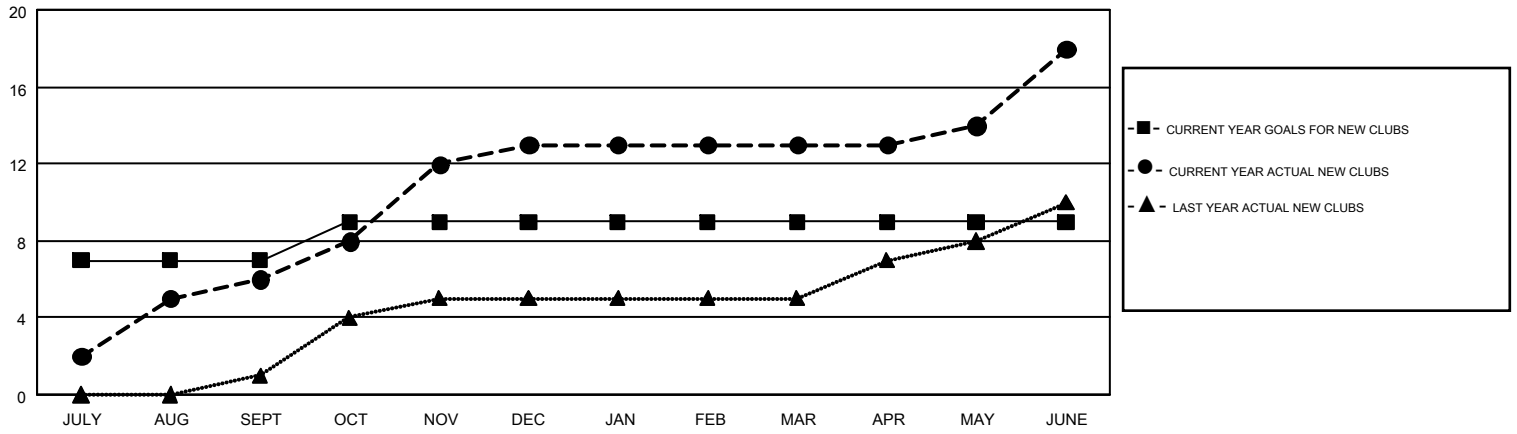
LOCATION: THAILAND

GMT: TERESA MANN

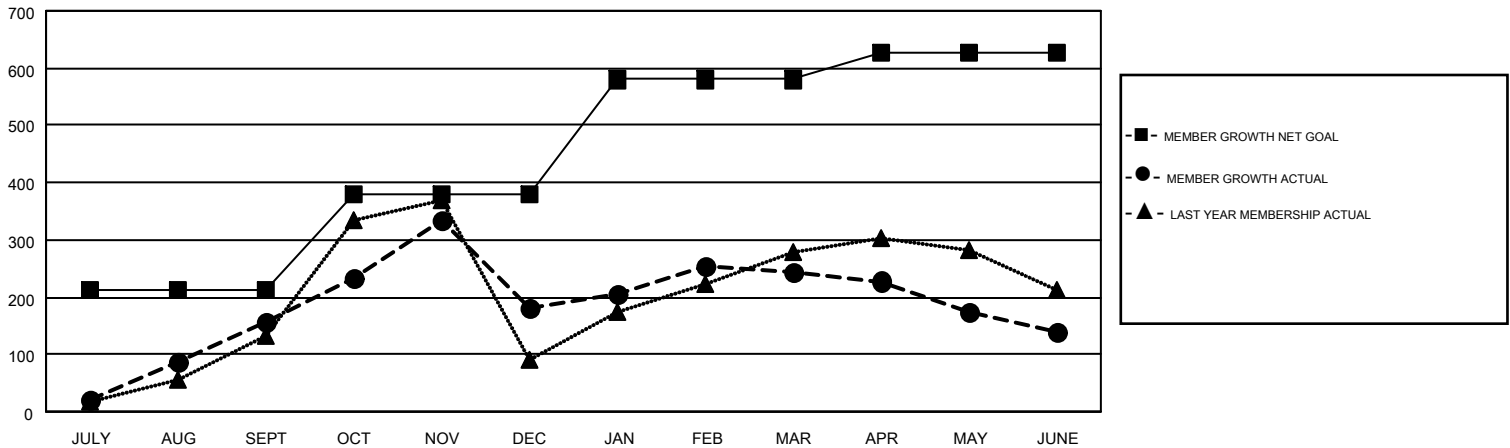
GMT CA 5

| Clubs                 |               |           |               | Members               |                        |                      |  |
|-----------------------|---------------|-----------|---------------|-----------------------|------------------------|----------------------|--|
| RESULTS FOR 2017-2018 |               |           |               | RESULTS FOR 2017-2018 |                        |                      |  |
| QUARTER               | NEW CLUB GOAL | NEW CLUBS | DROPPED CLUBS | QUARTER               | MEMBER GROWTH NET GOAL | MEMBER GROWTH ACTUAL | DROPPED MEMBERS ACTUAL (including transfers) |
| JULY/AUG/SEPT         | 7             | 6         | 2             | JULY/AUG/SEPT         | 212                    | 351                  | 176  |
| OCT/NOV/DEC           | 2             | 7         | 1             | OCT/NOV/DEC           | 168                    | 398                  | 364  |
| JAN/FEB/MAR           | 0             | 0         | 1             | JAN/FEB/MAR           | 200                    | 215                  | 139  |
| APR/MAY/JUNE          | 0             | 5         | 0             | APR/MAY/JUNE          | 48                     | 509                  | 589  |

GOALS AND ACTUAL NEW CLUBS CUMULATIVE



GOALS AND ACTUAL MEMBERS CUMULATIVE



|   |   |  |
|---|---|--|
| DROPPED CLUBS: 4  | 189 CLUBS OF 292 ADDED 1 OR MORE NEW MEMBERS              | <b>GENDER DISTRIBUTION</b><br>MALE 4,371 (55.37%)<br>FEMALE 3,523 (44.63%) |
| <b>DROPPED MEMBERS</b><br>DECEASED 31<br>CLUB CANCELLED 40<br>OTHER 1,197<br><b>TOTAL 1,268</b> | <a href="#">CLICK HERE FOR CUMULATIVE MEMBERSHIP DATA</a> | TOTAL FAMILY UNIT MEMBERS 0<br>FAMILY MEMBERS PAYING HALF DUES 0           |